

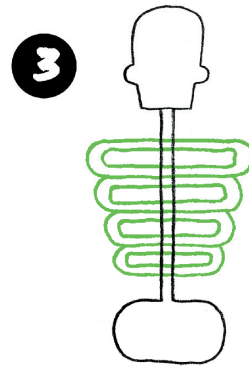
HOW TO DRAW A SKELETON



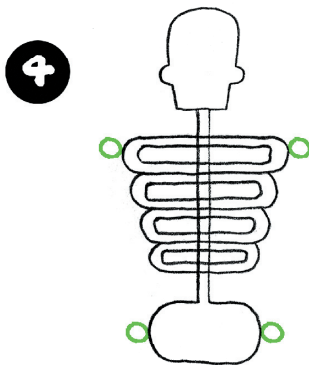
1
START
WITH THE
SKULL WITH
A SHAPE
LIKE THIS



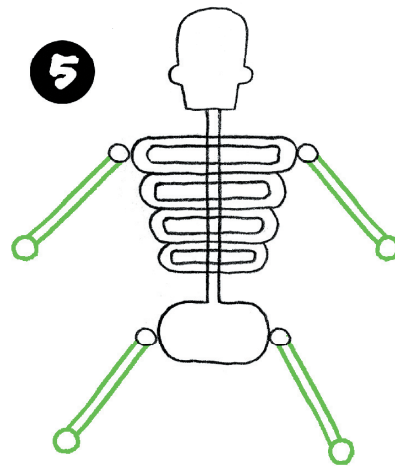
2
ADD THE
SPINE AND
PELVIS



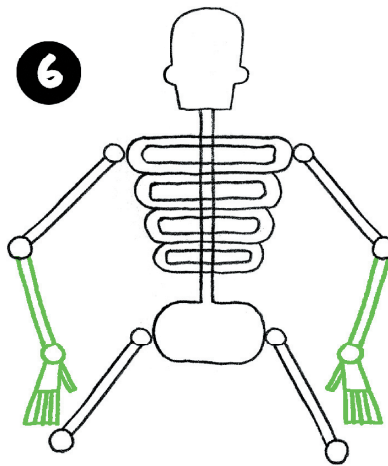
3
THEN
A RIB CAGE
LIKE THIS



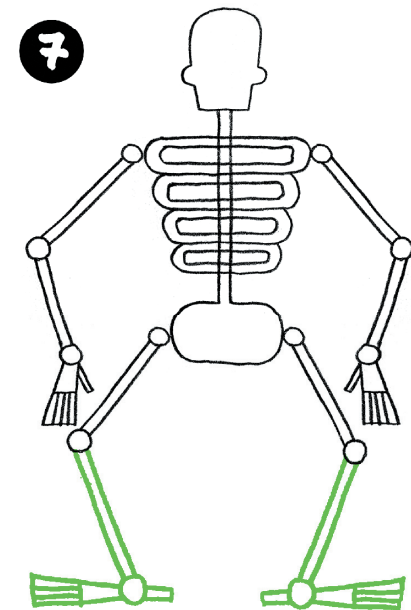
4
ADD JOINTS
AT THE SHOULDERS
AND HIPS



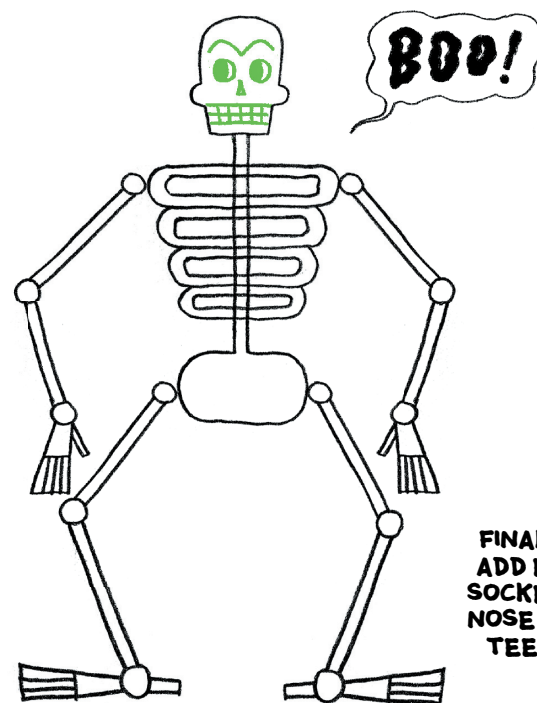
5
DRAW THE UPPER
ARMS AND LEGS. ADD
THE ELBOWS AND KNEES



6
NOW ADD THE LOWER
ARMS, WRISTS AND
HANDS ...



7
... FOLLOWED BY THE
LOWER LEGS AND
FEET



FINALLY
ADD EYE
SOCKETS,
NOSE AND
TEETH

PRACTISE DRAWING
A SKELETON HERE ...

LET'S DRAW SOME MORE

SKELETONS

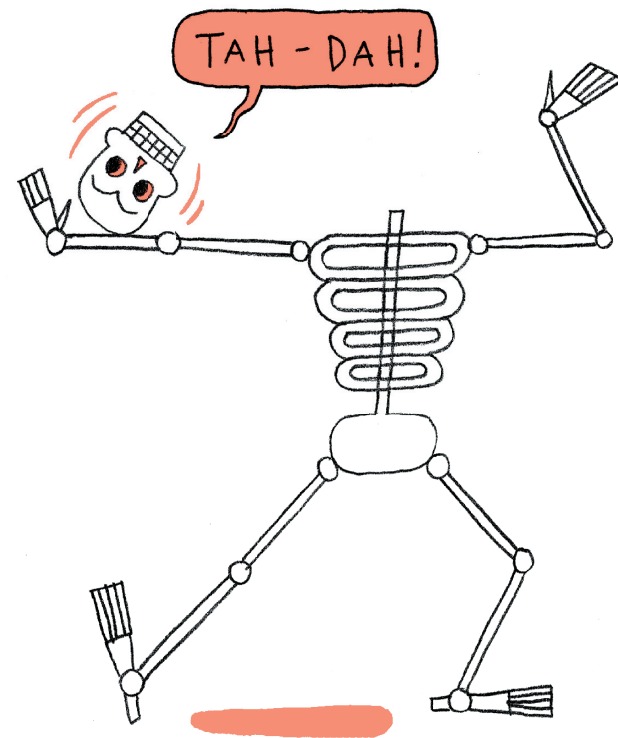
1

**SKELETONS
LOVE RUNNING
ABOUT
SCARING
PEOPLE!**



2

**THEY ARE
VERY GOOD
AT PERFORMING
TRICKS**

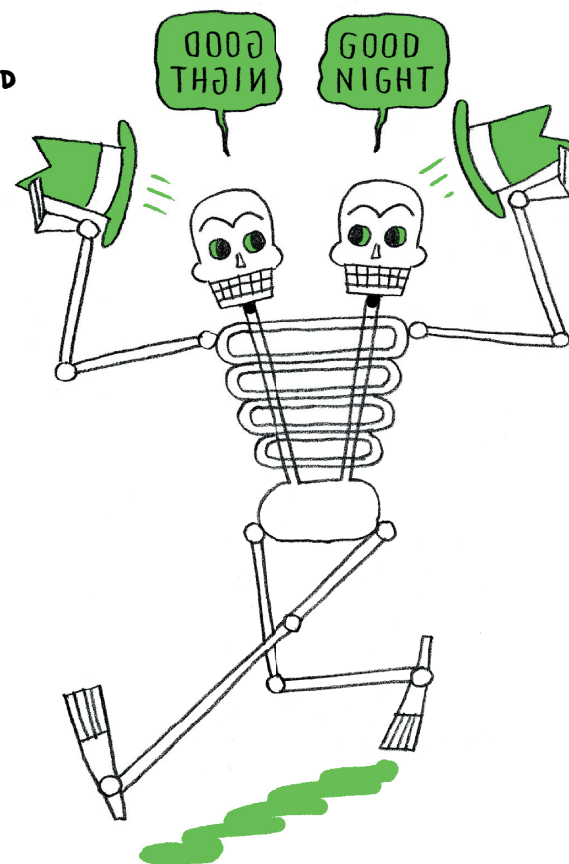


DRAW A RUNNING
SKELETON HERE

TRY DRAWING A
SKELETON DOING
A TRICK HERE

3

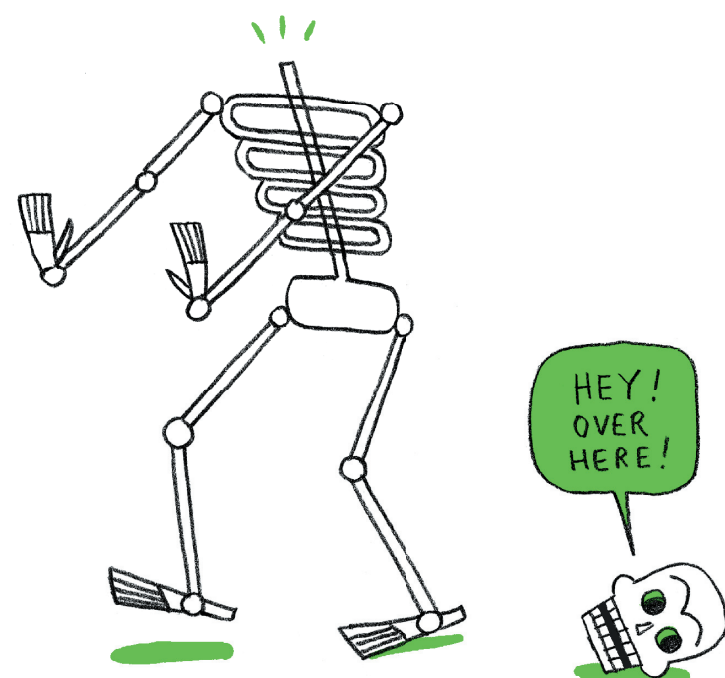
AAARGH!
IT'S A TWO-HEADED
SKELETON



COPY THE TWO-HEADED
SKELETON HERE

4

BUT SOMETIMES
THEY LOSE
THEIR
HEADS



DRAW A SKELETON
THAT HAS DROPPED
ITS HEAD HERE