



CONTENTS

The Hotel Lobby	4
Canal Crossing	6
Moon Square Carnival	8
Masquerade Ball	10
The Striped Mansion	12
Water Parade in the Backstreets	14
Gondola Chase	16
Motor Mountain Car Race	18
Sunset Balloon Ride.....	20
Root Island	22
Sun Tower Balcony	24
The Tree Climb	26
Nawona	28
The Dragon's Nest	30
Castle in the Sky	32
Epilogue	34
Answers	35

HOW TO PLAY

- 1 First, find the **START**.
Next, find the **GOAL** and follow the maze to get there.

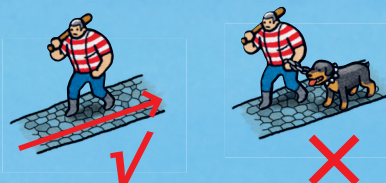


- 2 On each maze, solve **EXTRA CHALLENGES** and respond to written requests from other characters.

- 3 Try to find gold stars, red trophies, green and red treasure chests and other **HIDDEN OBJECTS** in each of the mazes.



- 4 If the course is **BLOCKED**, find an alternative route. You can walk past a person or animal on a path only if there is room to pass them. If there is more than one possible course, choose the **SHORTEST**.



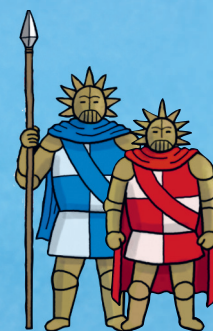
You can climb up and down steps and ladders as long as there is a path onto them. You can also cross flat objects such as carpets.



Pierre
The Maze
Detective



Carmen
Pierre's friend



Iron-masked Duo



Member of the
World Maze Disorder

PICTURE THE SCENE

The city by the sea is Canal City. And off the coast, on a small island, grows the mighty, towering Grand Tree whose branches reach so high that its canopy is hidden in the clouds. At the very top of the tree is the mystical Castle in the Sky and within it is one of the world's most precious treasures – the Maze Egg!

Safely nestled on its pedestal, the Maze Egg is only shown to the public every 50 years and that special day is now approaching. The people of Canal City are celebrating with parties, carnivals and dances.

Our favourite maze detectives, Pierre and Carmen, have come to Canal City to enjoy the festivities, but Pierre also has a feeling that all is not right with the Maze Egg, and his predictions are usually correct.

If the Maze Egg were to fall into the wrong hands, and be removed from its pedestal, the whole city would turn into a maze and chaos would ensue. Who better to investigate than the famous solver of mazes...

The Maze Detective!

